

LUBM
MARCULESTI INTL



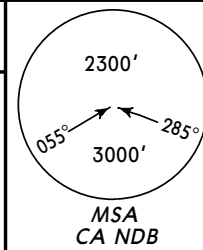
JEPPESEN MARCULESTI, MOLDOVA

30 APR 10 (10-2)

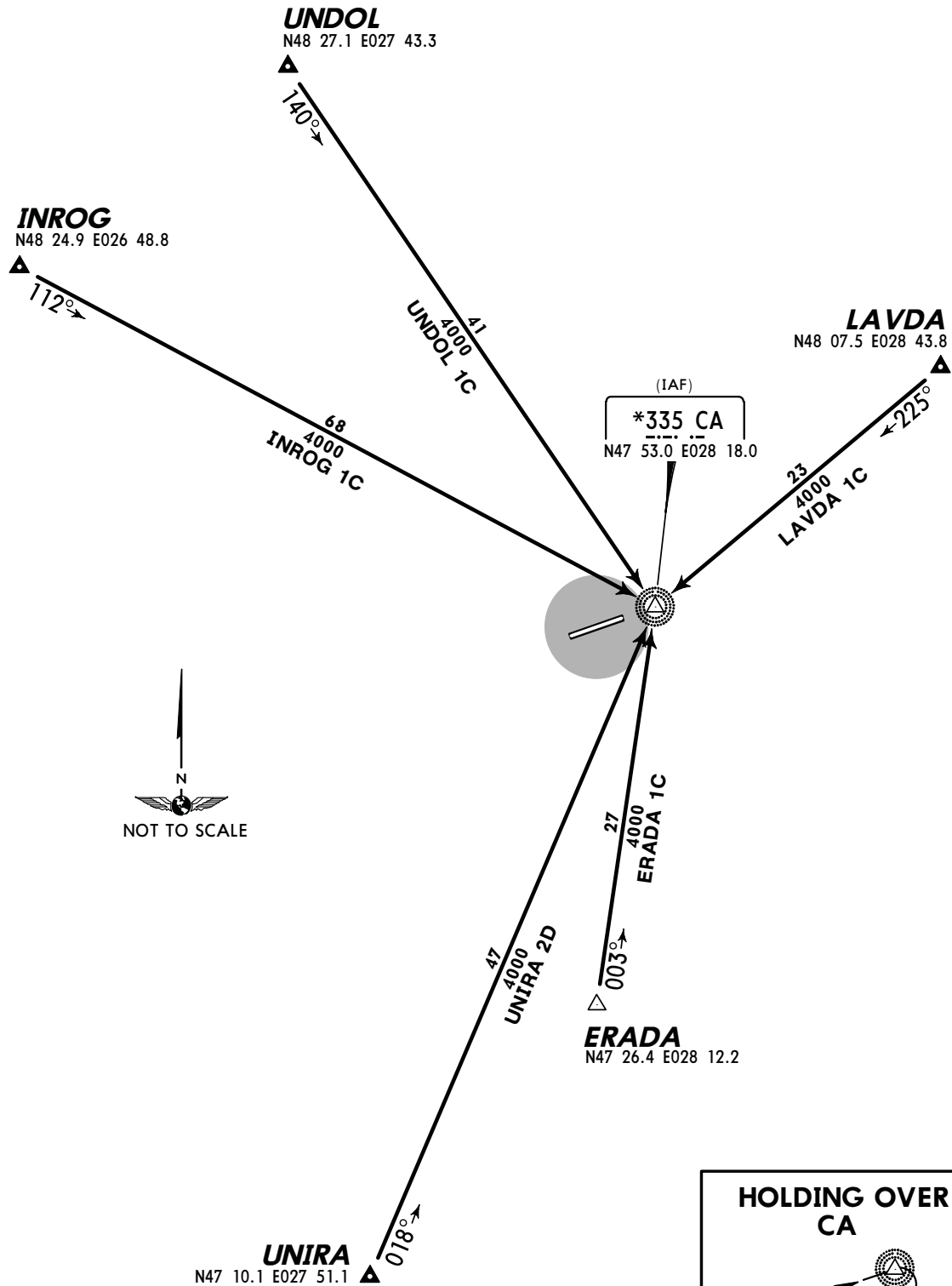
STAR

Apt Elev
331'

Alt Set: hPa Trans level: By ATC Trans alt: 4000'



ERADA 1C, INROG 1C, LAVDA 1C
UNDOL 1C, UNIRA 2D
RWY 25 ARRIVALS



**HOLDING OVER
CA**



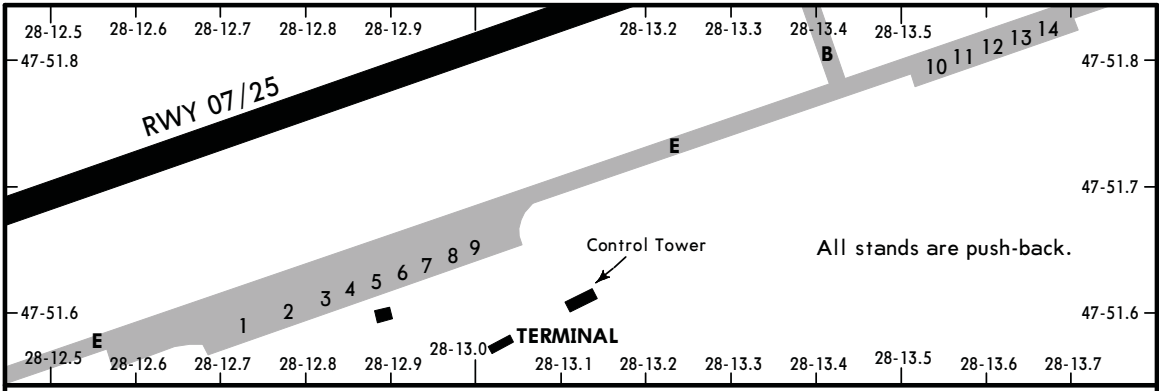
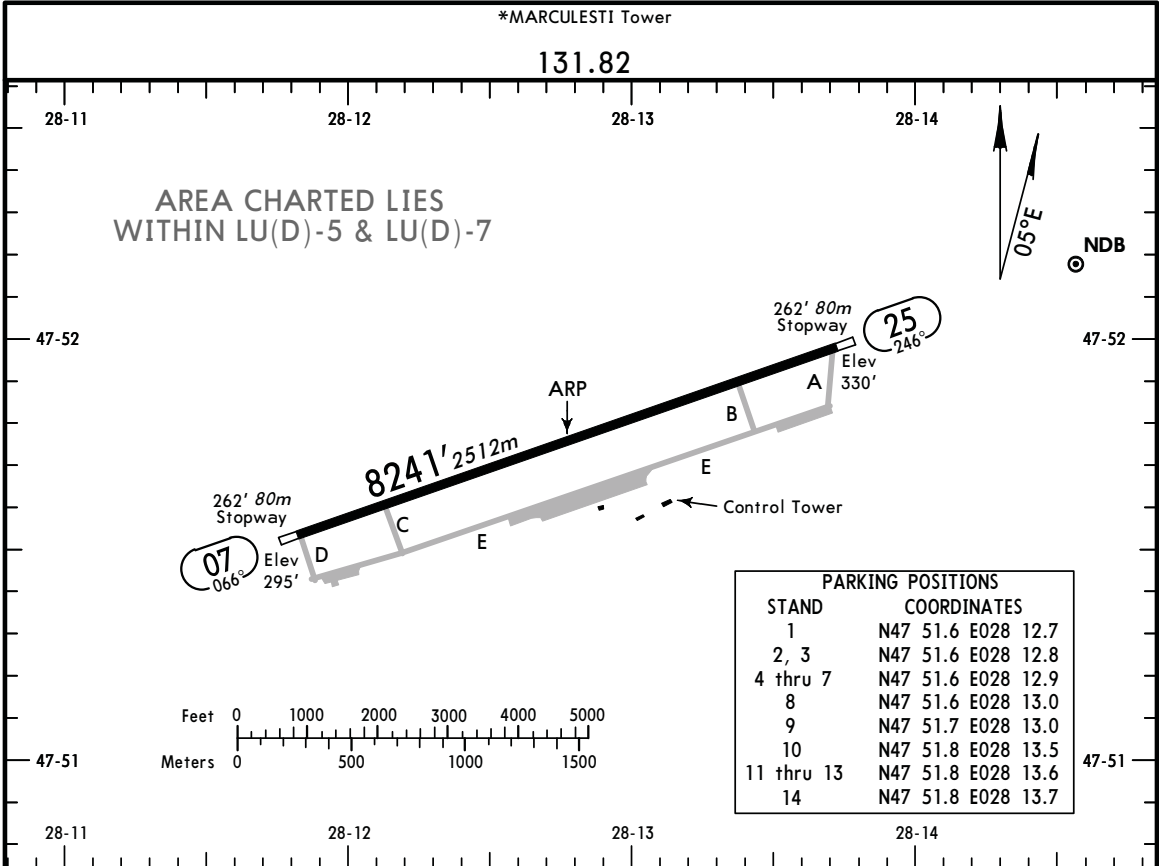
For Flight Simulator use ONLY

www.Flightsim.ro

LUBM
 Apt Elev **331'**
 N47 51.8 E028 12.8

JEPPesen
 3 JUL 09 **(10-9)**

MARCULESTI, MOLDOVA
 MARCULESTI INTL



ADDITIONAL RUNWAY INFORMATION

| RWY | USABLE LENGTHS | | | | WIDTH |
|-----|----------------|----------------|-------------|----------|-------|
| | Threshold | LANDING BEYOND | Glide Slope | TAKE-OFF | |
| 07 | | | | | 131' |
| 25 | | | | | 40m |

JAR-OPS TAKE-OFF I

| | All Rwy's | | |
|---|----------------------|-----------------------|----------------|
| | LVP must be in force | RCLM (DAY only) or RL | NIL (DAY only) |
| A | | | |
| B | 250m | 400m | 500m |
| C | | | |
| D | 300m | | |

I Operators applying U.S. Ops Specs: CL required below 300m.

For Flight Simulator use ONLY

www.Flightsim.ro

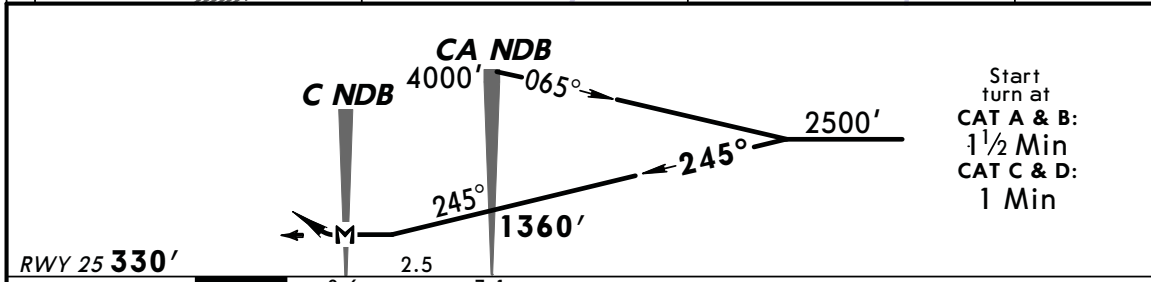
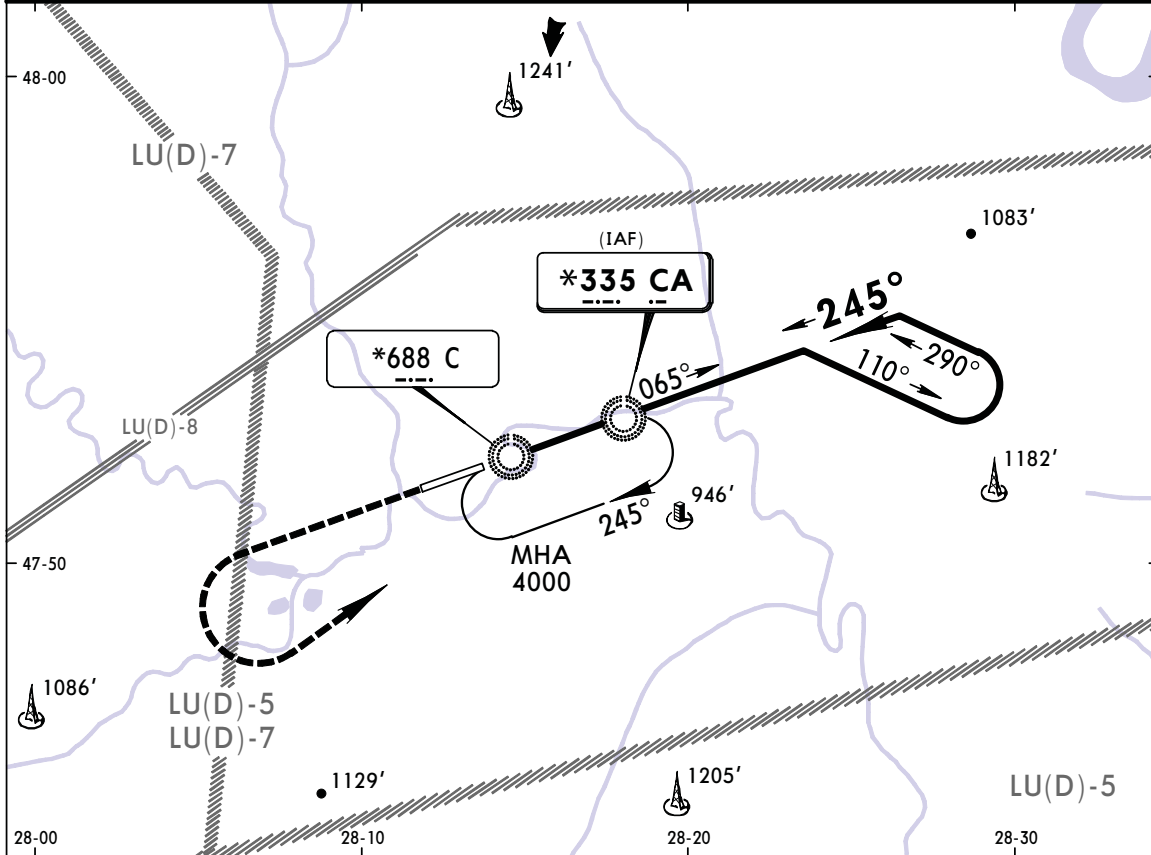
LUBM
MARCULESTI INTL

JEPPESEN
 3 JUL 09 (16-1)

MARCULESTI, MOLDOVA
2 NDB Rwy 25

BRIEFING STRIP™

| | | | | | |
|---|----------------------------------|---|------------------------------|---|--|
| *MARCULESTI Tower 131.82 | | | | | |
| NDB CA *335 | Final Apch Crs 245° | Minimum Alt CA NDB 1360' (1030') | MDA(H) 760' (430') | Apt Elev RWY 331' 330' | |
| MISSED APCH: Climb STRAIGHT AHEAD to 2000', then turn LEFT inbound CA NDB climbing to 4000'. | | | | | |
| Alt Set: hPa | Rwy Elev: 12 hPa | Trans level: By ATC | Trans alt: 4000' | MSA CA NDB | |



| | | | | | | |
|-----------------------|-----|-----|-----|--------------|------------------|--------------|
| RWY 25 330' | 0.6 | 2.5 | 3.1 | 2000' | CA 335 | 4000' |
| Gnd speed-Kts | 70 | 90 | 100 | 120 | 140 | 160 |
| Descent Gradient 5.2% | 369 | 474 | 527 | 632 | 737 | 843 |
| MAP at C NDB | | | | | | |

| JAR-OPS | | STRAIGHT-IN LANDING RWY 25 | | CIRCLE-TO-LAND | |
|---------|---------------------------|----------------------------|---------------------|----------------|--|
| | MDA(H) 760' (430') | Max Kts | MDA(H) | VIS | |
| A | RVR 1500m | 100 | 760' (429') | 1500m | |
| B | RVR 1800m | 135 | 1110' (779') | 1600m | |
| C | RVR 2000m | 180 | 1310' (979') | 2400m | |
| D | RVR 2000m | 205 | 1330' (999') | 3600m | |

For Flight Simulator use ONLY

www.Flightsim.ro